

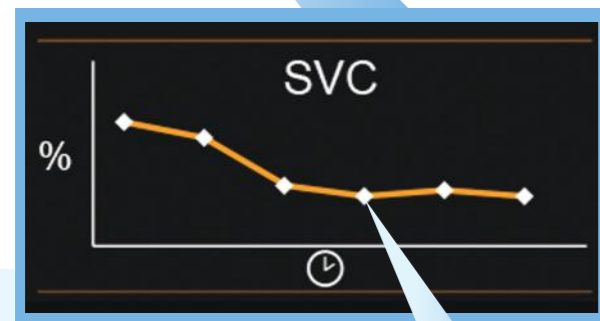
CONFIDENT • TIMELY • PROACTIVE



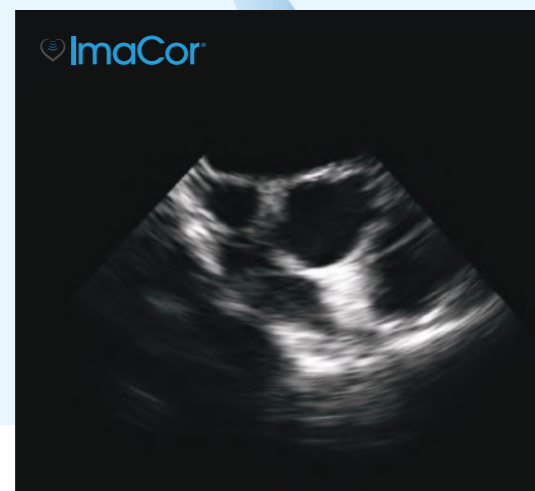
**POINTS-IN-TIME IMAGING™**

hTEE's continuously available direct visualization provides the true measurement of cardiac function. Graphic visualization of hemodynamic data over time is displayed adjacent to real-time hTEE imaging:

- LVEDA - assess preload and contractility
- SVC - determine fluid responsiveness
- RV/LV ratio - evaluate right ventricular functionality



POINTS-IN-TIME IMAGING™ GIVES YOU CONFIDENCE IN YOUR DECISIONS.



Point-in-time image

**ADVANCED HEMODYNAMIC MANAGEMENT PROGRAM**

Zura-EVO 1™

ImaCor designs, manufactures, and distributes hTEE™ (hemodynamic transesophageal echocardiography), the ONLY critical care solution that provides a true measurement of cardiac function over time. hTEE imaging is easy to obtain with the Zura™ family of ultrasound systems and the 72-hour indwelling miniaturized ClariTEE® probe with AdaptaFlex™ positioning. hTEE has impacted over 8,000 patients worldwide, saving millions of dollars across the continuum of care.

877.244.0657 | [info@ImaCorInc.com](mailto:info@ImaCorInc.com) | [www.ImaCorInc.com](http://www.ImaCorInc.com)



# ZURA-EVO 1™

ImaCor's Advanced Hemodynamic Management Program provides continuous direct visualization of cardiac filling and function in the critical care setting:

- Efficient and fast performance
- High resolution 19" touch screen monitor
- Custom-designed portable and ergonomic cart
- Side-by-side imaging for episodic comparison
- Battery for mobility



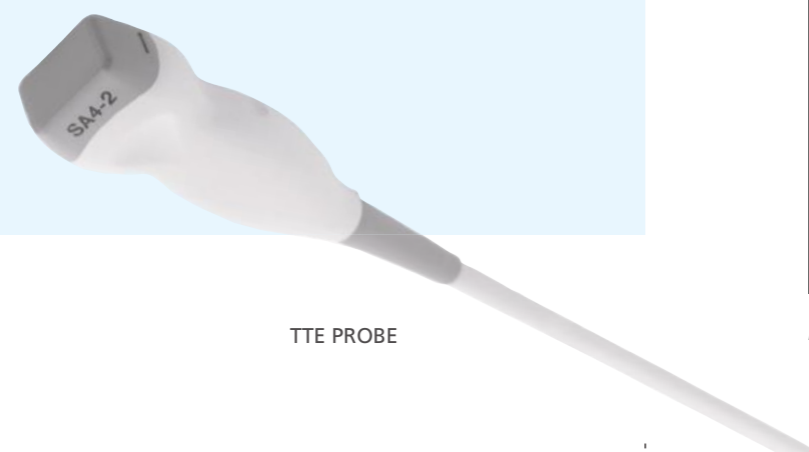
## OPTIMIZED FOR HEMODYNAMIC MANAGEMENT

### Claritee® PROBE

- Miniaturized design - 5.5 mm diameter <1/3 size of conventional TEE
- 18 cm imaging depth capability at 7 MHz frequency
- AdaptaFlex™ probe flexion for optimal placement
- Up to 72 hours of continuous use providing episodic assessment over time
- Disposable and detachable probe

### TTE PROBE

- Complements hTEE management with quick assesment of critically ill patients
- High resolution imaging for advanced hemodynamic management

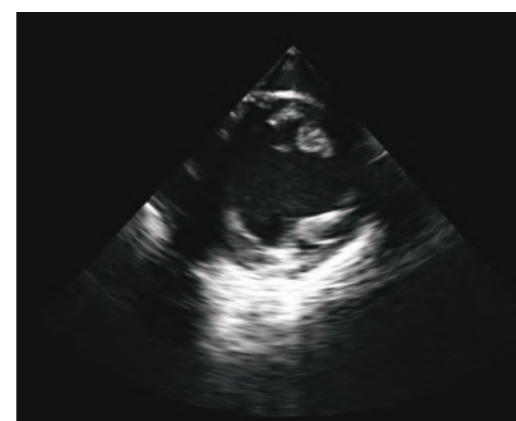


Claritee® PROBE

TTE PROBE

## BETTER THAN EVER IMAGING

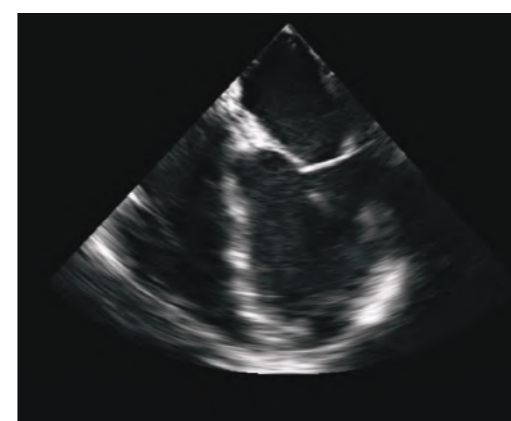
### hTEE



Transgastric Short Axis

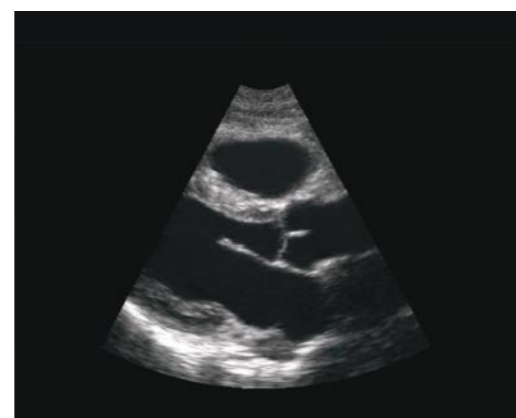


Superior Vena Cava

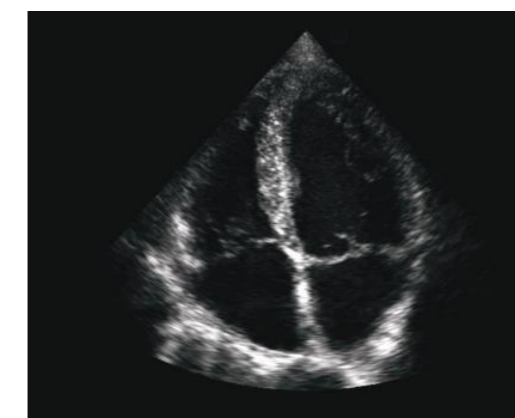


Midesophageal Four Chamber

### TTE



Parasternal Long Axis



Apical Four Chamber

## BENEFITS INCLUDE:

**Confident:** hTEE is the only technology in critical care that provides a true measurement of cardiac function and continuously available direct visualization.

**Timely:** The miniaturized and disposable Claritee® probe can be left indwelling for 72 hours for episodic assessment to easily perform and obtain imaging.

**Proactive:** Hemodynamic management with hTEE provides early recognition, early intervention, improves outcomes, and reduces cost.

## Confident

“ Critically ill patients in the ICU are dynamic, requiring frequent and immediate decisions based on hTEE, which provides a good measure of cardiac performance. ”

- Joseph D. Love, DO, Memorial Hermann Hospital

## Timely

“ We are relying on hTEE heavily in trauma patients who are older, have multiple comorbidities, have preexisting, multisystem issues, and who may need a more gentle and careful resuscitation approach. We are relying on hTEE to give us feedback on how not to over treat these patients. ”

- Dennis Ashley, MD, Navicent Health

## Proactive

“ hTEE appeared easy to use by intensivists on demand and yielded significant management changes, potentially avoiding reoperation with concomitant mortality and morbidity, as well as cost. ”

- Nicholas Cavarocchi, MD, Thomas Jefferson University Hospital