

ordering information

Unique design and long lengths available

optiBLOCK

Model No.	Implant size
OPTI0103BLK	1mm x 3cm
OPTI0153BLK	1.5mm x 3cm
OPTI0156BLK	1.5mm x 6cm
OPTI0158BLK	1.5mm x 8cm
OPTI0204BLK	2mm x 4cm
OPTI0206BLK	2mm x 6cm
OPTI0212BLK	2mm x 12cm
OPTI0258BLK	2.5mm x 8cm
OPTI2512BLK	2.5mm x 12cm
OPTI0310BLK	3mm x 10cm
OPTI0320BLK	3mm x 20cm
OPTI3520BLK	3.5mm x 20cm
OPTI3530BLK	3.5mm x 30cm

Model No.	Implant size
OPTI0420BLK	4mm x 20cm
OPTI0435BLK	4mm x 35cm
OPTI0517BLK	5mm x 17cm
OPTI0540BLK	5mm x 40cm
OPTI0635BLK	6mm x 35cm
OPTI0650BLK	6mm x 50cm
OPTI0750BLK	7mm x 50cm
OPTI0865BLK	8mm x 65cm
OPTI0965BLK	9mm x 65cm
OPTI1065BLK	10mm x 65cm
OPTI1265BLK	12mm x 65cm
OPTI1465BLK	14mm x 65cm

XCEL Detachment Controller

Model No.	Box content
XCEL	1 detachment controller

optiBLOCK

precision placement,
efficient occlusion



* TR17-010 and TR19-036, Data on file, Balt USA. optiBLOCK was approved on 22-Aug-2024 in accordance with the Medical Devices Rule 2017 in India and is indicated for use in the endovascular embolization of intracranial aneurysms and other neurovascular abnormalities such as arteriovenous malformations and arteriovenous fistulae. This product has not been approved for use outside of the U.S. and India. The content of this document, in particular data, information, trademarks and logo is BALT S.A.S and affiliates' sole property. Consequently, all representation and/or reproduction, whether in part or in full, is forbidden and would be considered a violation of BALT S.A.S and affiliates' copyrights and other intellectual proprietary rights ©2024 BALT S.A.S and affiliates all rights reserved. This document with associated pictures is non-contractual and is solely dedicated to healthcare professionals and BALT's distributors (BALT's supplier's distributors). The products commercialized by BALT shall exclusively be used in accordance with the package inserts which have been updated and included in the boxes.



Balt
10, rue de la Croix Vigneron, 95160 Montmorency, France
Tel. : +33 (0)1 39 89 46 41
www.baltgroup.com


inspiring innovation


inspiring innovation

optiBLOCK

unique design to anchor, basket and fill

Intended to endovascularly obstruct or occlude blood flow in vascular abnormalities of the neurovascular and peripheral vessels.



● Precision anchor

Precisely placed via 3 nominally sized, standard anchor loops

Minimized flutter when deploying

Stable backstop for basket segment

● Basket

Basket shape frames and provides proximal coil containment

● Fill

Proximal loops designed to densely fill basket for an efficient occlusion

● Reliable & instantaneous detachment*

Same thermal detachment than the optima coil system

Dense Cross-Sectional Occlusion with OptiBLOCK

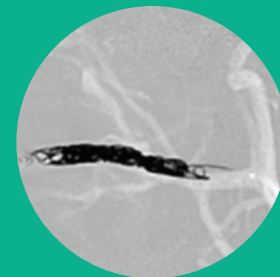


5mm x 17cm OptiMax Complex Soft in 5mm vessel

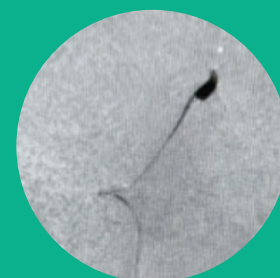


5mm x 40cm OptiBLOCK in 5mm vessel

Efficient occlusion



(1) OptiBLOCK 3mm x 20cm and (2) OptiBLOCK 4mm x 35cm



1.5mm x 8cm OptiBLOCK in MMA Embolization

aneurysm treatment

all optiBLOCK are compatible with

≥ .0165" coiling catheter